



PRIndex—A new indicator of land tenure security

Land Governance Network IV Annual Meeting UNICAMP, June 5, 2018



UKaid

from the British people



GLOBAL LAND ALLIANCE

SUSTAINABLE PROSPERITY FOR PEOPLE & PLACES



OMIDYAR NETWORK

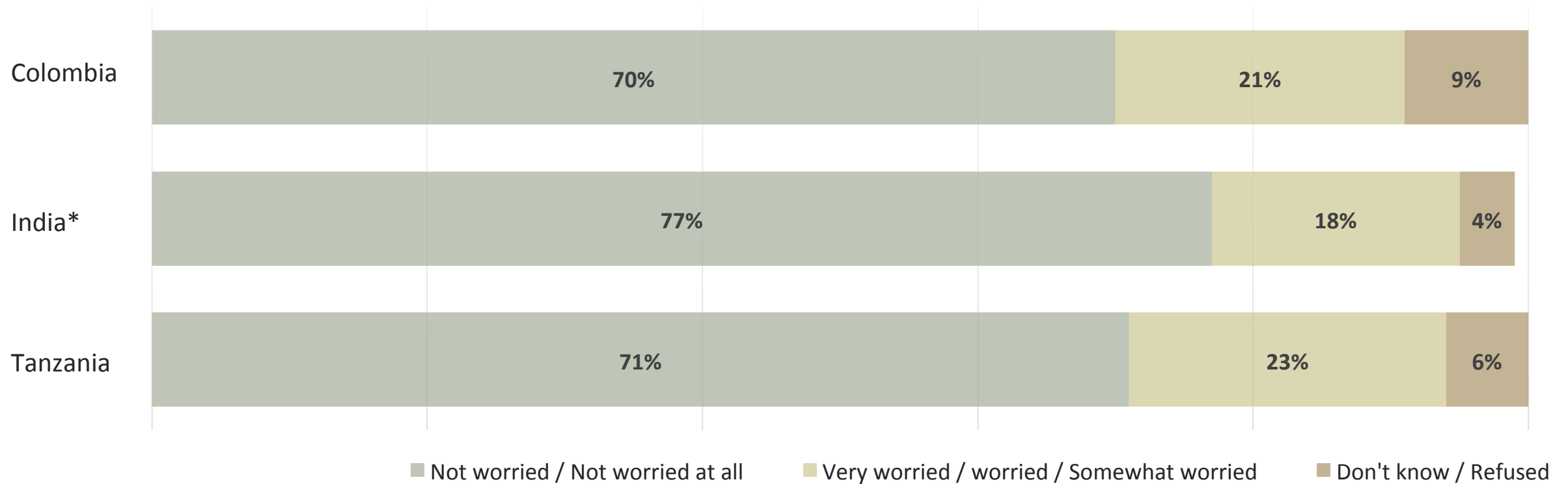


PRIndex pilot surveys in 2016 in 8 countries including Brazil

on average than those who are secure; tenure-insecure owners also report a somewhat higher average for number of children under 15 living in the household than do those who are tenure secure. Among renters, those classified as secure are actually slightly *younger* on average than those who are very insecure, with no differences in average household size or number of children in the household.

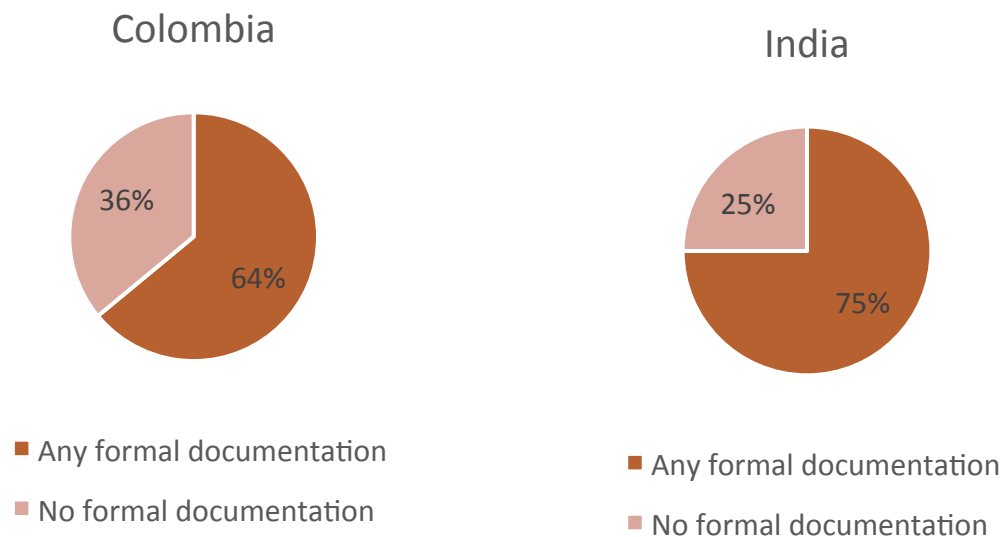
Findings from 3-country test: Colombia, India & Tanzania

TENURE SECURITY BASED ON WORRY OF LOSING RIGHTS TO CURRENT PROPERTY LIVING IN AGAINST WILL IN NEXT 5 YEARS

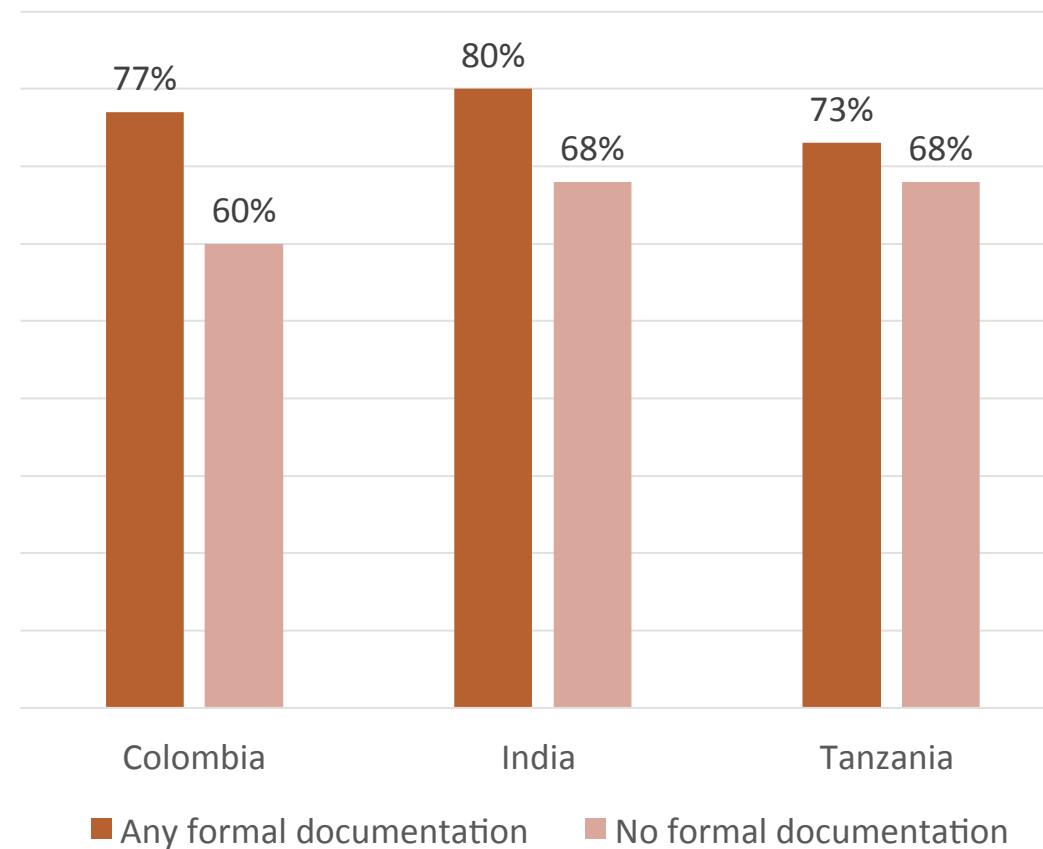


The relationship between perceived tenure security and possession of formal documentation....

Possession of formal documentation



Tenure Security rates based on possessing formal documents vs no formal documents

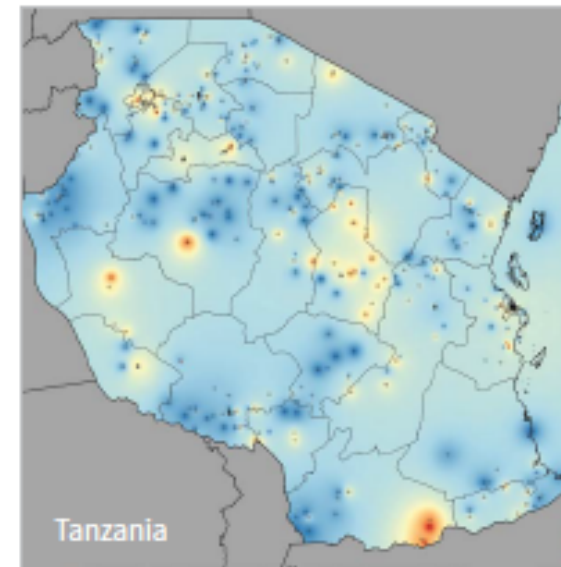
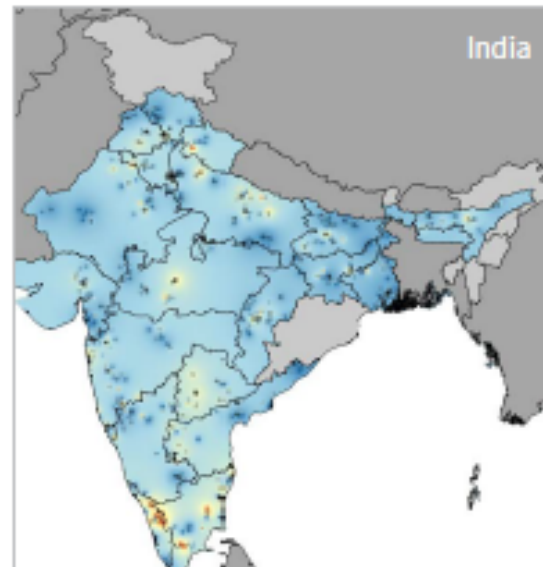
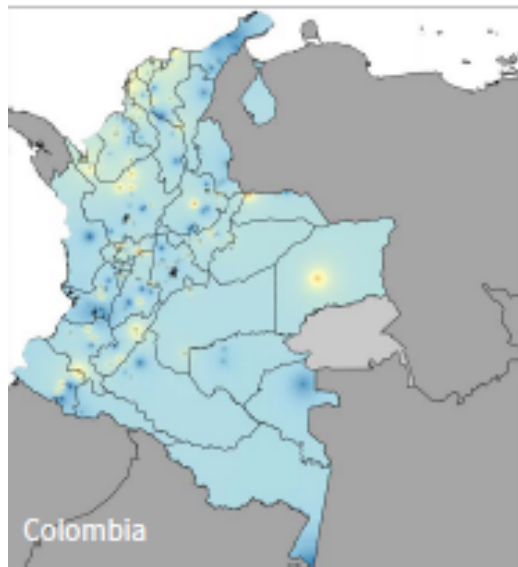


PRIndex results show differences within countries....

Geospatial visualization of perceived tenure security

FIGURE 5

■ less than 20% insecure ■ 20%-39% insecure ■ 40%-59% insecure ■ 60%-79% insecure ■ 80% and more insecure ■ No data





Summary comparison of the tenure secure vs. the not tenure secure



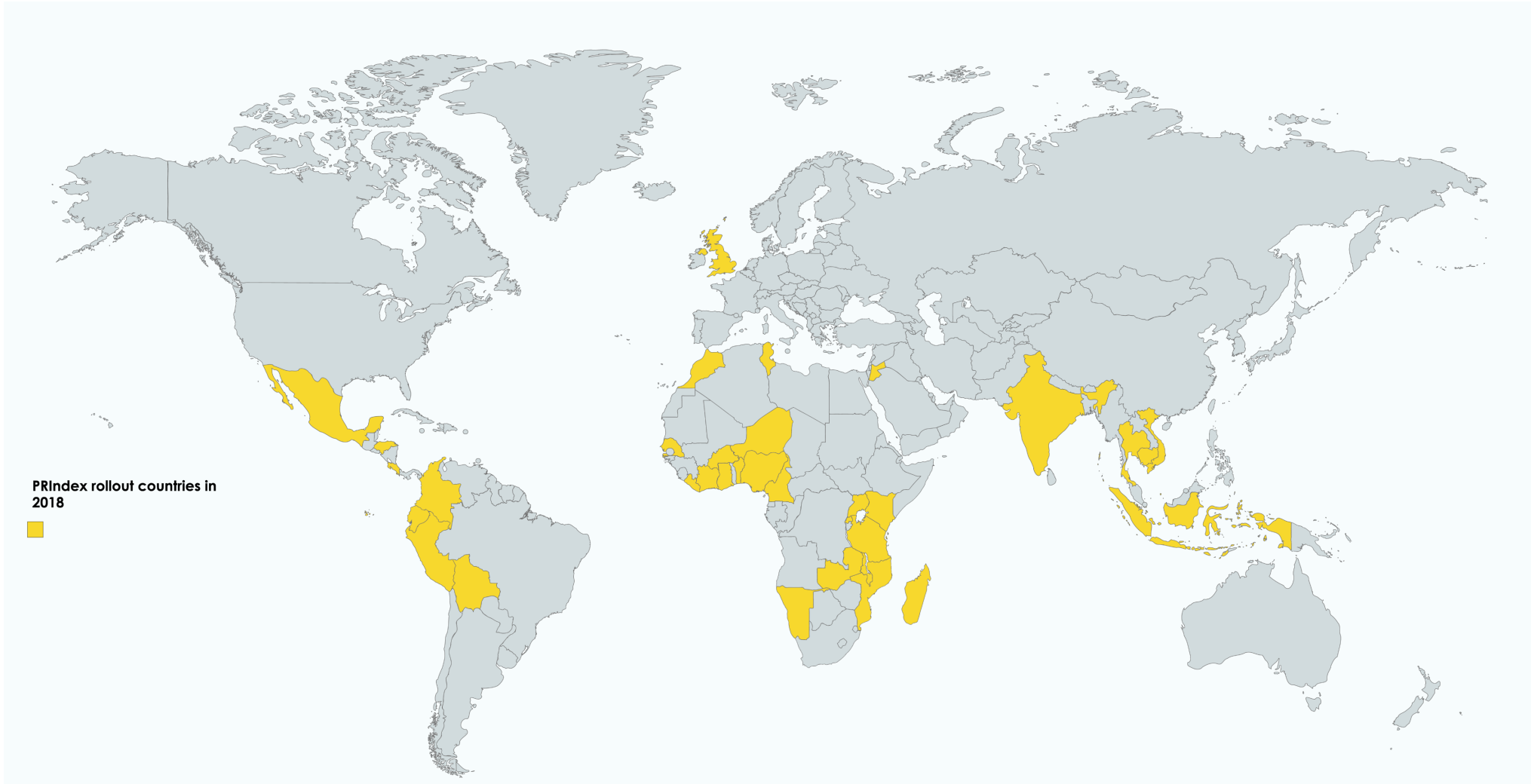
Summary findings

TABLE 11

	Colombia	India	Tanzania
Not Tenure Secure	29%	23%	30%
Attributes associated with those lacking tenure security			
Shorter length of stay in current property	✓	✓	✓
Not owning the property	✓	✓	✓
Negative economic outlook	✓	✓	✗
Location: Urban vs Rural			
No formal documentation	✓	✓	✗
Having more than one property	✗	✗	✓

PRIndex will be rolled out to 34 countries in 2018....

PRIndex.



..... And is looking to expand to 70 and ultimately 140 countries.

Where we are aiming....

Secure resources to expand from 34 to up to 140 countries by 2020.

Provide rapid baseline of perception data for global land indicators

Movement – building through partnerships on property rights for:

- Gender equality
- Inclusive Urbanisation
- Poverty reduction



Profile of land rights raised, supporting efforts for SDG indicator **1.4.2 to reach Tier 1 by 2020.**

Governments, business and civil society organisations use PRIndex to **develop and evaluate policies, business models and programs**

More resources are leveraged into land

For further
information go
to:

www.prindex.net



@PRIndexGlobal

Sign up for our newsletter
at: www.prindex.net/bulletin

PRIndex.

